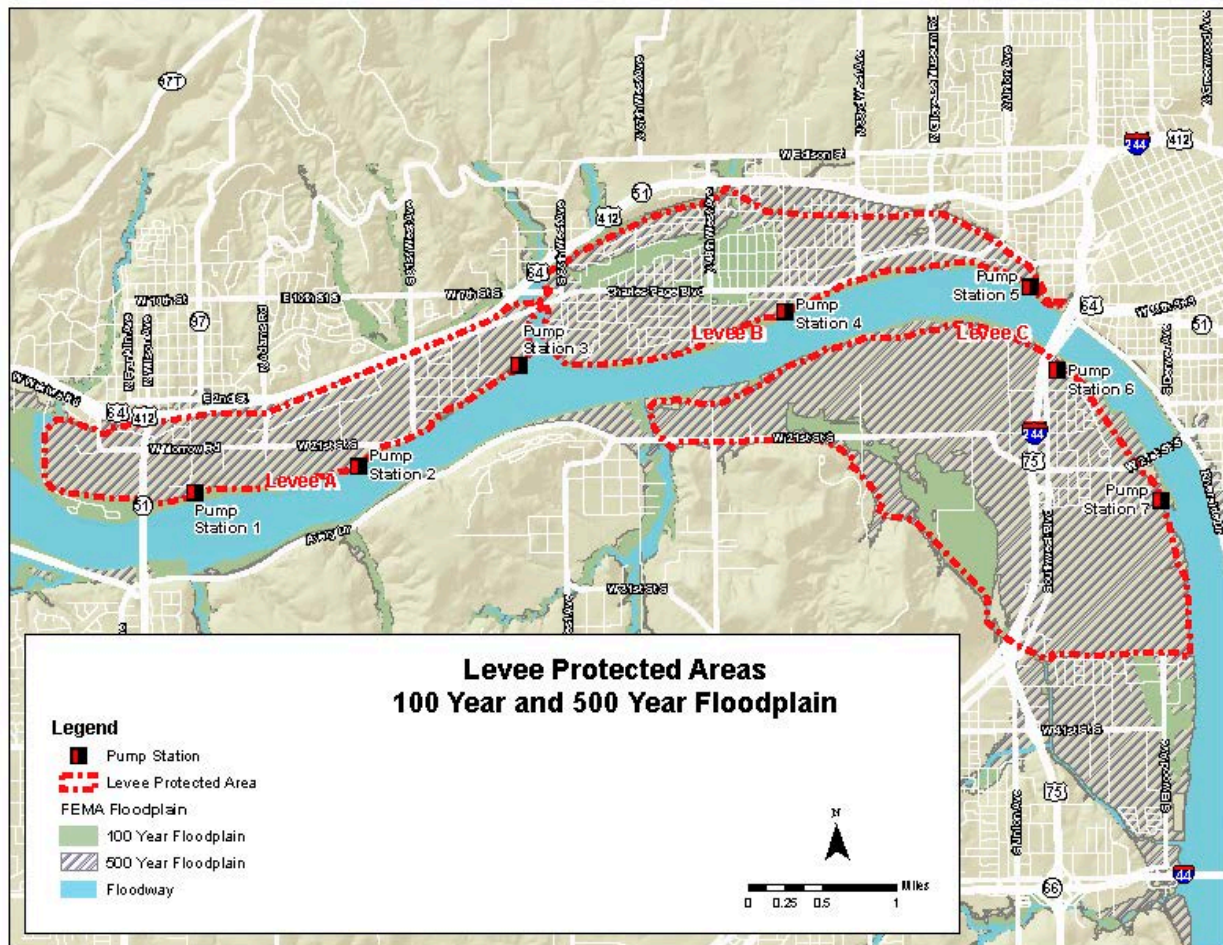

INCOG- EDD

2020 Regional
Economic
Development Annual
Report

Indian Nations Council of
Governments Economic
Development District

The following is an update on awarded EDA projects in the INCOG Region which support the 2018-2022 Comprehensive Economic Development Strategy.

1. In the summer of 2019, a Presidential Disaster Declaration was issued in response to the widespread flooding that had occurred in multiple states. As a result, supplemental disaster funding was provided to EDA to help communities in the devastated areas recover from this natural disaster. That Fall, **Tulsa County, Tulsa County Levee District 12**, and INCOG partnered to submit a grant application to EDA for a project that would support critical improvements to the World War II era pump stations (several of which failed during the flooding event) strategically situated within the Tulsa – West Tulsa Levee System along the banks of the Arkansas River. In the Spring of 2020, the project was awarded a \$3 million EDA Disaster Supplemental Grant. This grant will improve regional resiliency in its ability to help avoid or withstand weather related disasters and the economic shocks as a result. The project, in conjunction with a USACE project, will replace all of the antiquated pumps at 5 of the stations and provide back-up power and install telemetry and a SCADA system at all 7 stations.



2. In the summer of 2019, INCOG worked with the **Tulsa Port of Catoosa** to develop a proposal for EDA Disaster Supplemental Assistance when the US Army Corps of Engineers suspended barge traffic on the McClellan-Kerr Arkansas River Navigation System because of rapidly moving waters after a significant flooding event. The project that was submitted supports regional economic resiliency by improving and reconstructing critical rail infrastructure and



road at-grade crossings at the Tulsa Port to ensure its intermodal terminal and mainline railroad can be relied upon for freight shipments when barge traffic has been suspended due to significant weather events. EDA finalized the \$1.1 million award in March 2020. Project construction started in November 2020 and is expected to be completed in March 2021.

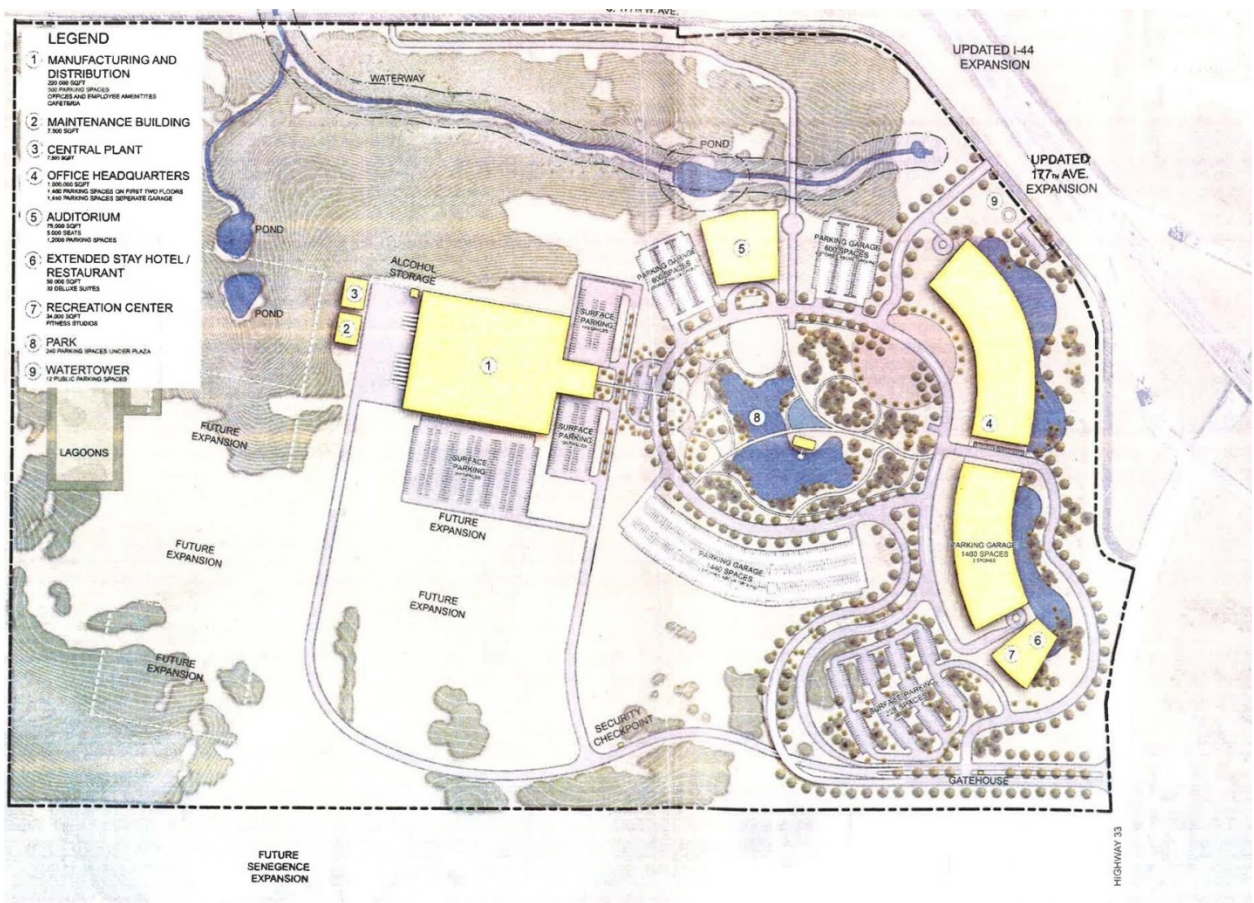


3. Though **Rogers County** is not in the INCOG-EDD it is a member of INCOG which allows it to utilize certain economic development services for project development and grant writing. In 2017, the county requested that INCOG partner with the Grand Gateway Economic Development Association to develop a proposal on an economic development project that would leverage a \$360,000,000 investment by Sofidel America to construct a two million square-foot manufacturing and distribution facility that would create 233 new jobs. The public works project that was submitted for EDA consideration included the construction of a waterline extension, sanitary sewer and total retention lagoon at an industrial area in Inola, Oklahoma. The project was awarded a \$1.5 million EDA grant in October 2017. Construction of the EDA project began in November 2018 and was completed in August 2019. Notice of closeout was issued in December 2019. Sofidel started limited operations in September 2019 and the facility became fully operational in early June 2020.



- City of Sapulpa** submitted a full application to EDA requesting \$2 million in assistance to develop a 6-mile long force main sanitary sewer line to service 250-acres of land where SeneGence International will construct a new global headquarters. In December 2017, EDA awarded \$1.5 million toward the construction of the public works project. The project will help deliver approximately 1,500 new jobs over a period of 10 years with an estimated \$640,000,000 impact to the region.

There was a minor change to the alignment of the EDA funded project. The City of Sapulpa and SeneGence reached an agreement for the new alignment of the EDA funded project in January 2019. INCOG submitted the request for review and approval of the new force main alignment to EDA and received approval of the change in February 2019. Construction is scheduled to start early Spring 2021.



5. **City of Bristow** was originally awarded an EDA grant in August 2017 for its Airport Runway Reconstruction. The \$1,000,000 grant was expected to be used to assist in the construction of a new asphalt runway (4,000' in length and 75' in width) and upgraded intensity runway lights necessary for night operations with the existing runway converted to a future parallel taxiway to serve the new runway being constructed.

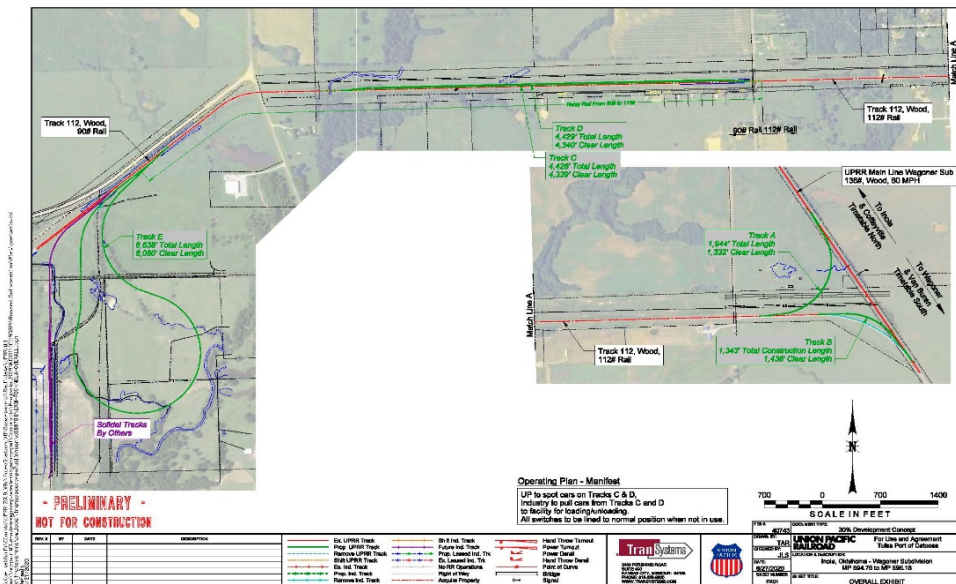
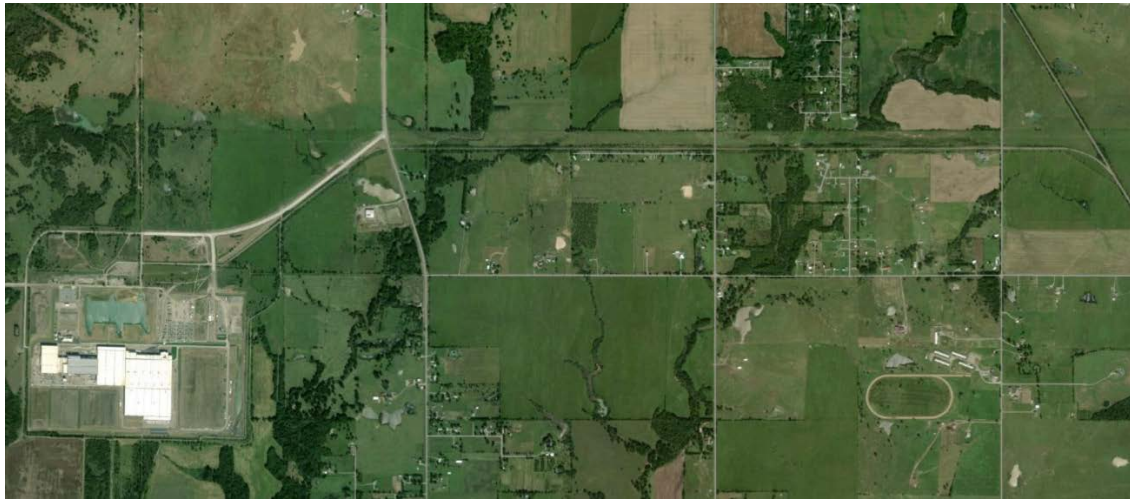
In the summer of 2018, the City of Bristow requested that the scope of the project be revised to consist of the construction of a terminal building and fuel tanks to service the airport. The revised project scope is the result of the city receiving lower than expected bids for the runway for which EDA funds were originally requested. The construction of a new terminal and fuel tanks will better support business clients and customers and increase the economic viability of this municipal facility. The revised scope will result in more private investment and job creation than originally planned.

The revised scope of work was submitted to EDA in October 2018 for its review and was approved in May 2019. Engineering plans were finalized in the Fall 2020 and construction is expected to begin by the end of the 1st quarter 2021.



In addition, INCOG pursued FY20 USDOT funding for a major transportation project which supports regional economic development strategies.

The **Tulsa Ports** and INCOG worked to assemble a multijurisdictional partnership in support of an FY2020 USDOT-INFRA Grant Application. The submitted project was awarded a \$6.1 million grant in June 2020. The Rural Industrial Park Rail Switching Enhancement Project addresses inadequate rail infrastructure which accesses the national freight rail network located at a 2,200-acre industrial park owned by the City of Tulsa-Rogers County Port Authority. The Project advances national and regional priority transportation and economic development goals of safety and economic competitiveness in its ability to remove freight trucks off the rural highway and bridge system by providing industrial access to the national freight rail system, continuing the trend of rural job creation in the area, and providing modal options for current and future industrial park tenants. Project construction is expected to commence Spring 2021. The completion of the project is of critical importance to future expansion of the Sofidel facility.



2020 EDA APPLICATIONS

What follows are regionally significant economic development projects that were submitted for EDA's consideration in 2020.

Over the last two planning periods, INCOG has been working with the Osage Nation ("Nation") to develop an existing airpark it owns into a drone port and R&D park known as Skyway 36. INCOG's economic development staff assisted the Nation over this period with project planning and development to ensure that it addressed EDA investment priorities and program eligibility. The proposed project will completely renovate an unimproved area of 21,000 square-feet which includes existing office space and airpark hangar. The proposed project is a regionally significant project and several regional small businesses, a national corporation, and local technology and innovation organization have expressed interest in partnering with the Nation to utilize the facilities if they can be improved. The Osage Nation submitted its application to EDA in July 2020 and submitted additional information in August for EDA program funding consideration. In late 2020, another national corporation expressed interest in utilizing the Skyway 36 facilities to advance its energy innovation operations.



Beginning in 2019, INCOG worked with a local non-profit makers space, Fab Lab Tulsa, on the expansion of its workforce facilities in one of Tulsa's federal Opportunity Zones. The economic development project being undertaken by Fab Lab required federal funding assistance to help purchase the equipment needed for the planned facility expansion. The initial application submitted in 2019 was declined due to a lack of federal program funding. Throughout 2020, INCOG worked with Fab Lab to redevelop the proposed project for future EDA consideration. When the construction schedule of the new facility was finalized and all project partners and funding commitments secured, INCOG resubmitted the application to EDA in November 2020. The resubmitted project will help purchase modern digital fabrication machinery and systems that match local industry needs for use in Fab Lab Tulsa's regional outreach program to underserved areas.

FAB LAB TULSA

HARDESTY HUB FOR MAKERS

